

Aetna Park to Park 10 miler

Denver, CO
 USATF Certificate CO10035DCR
 Effective 7/23/2011 - 12/31/2021

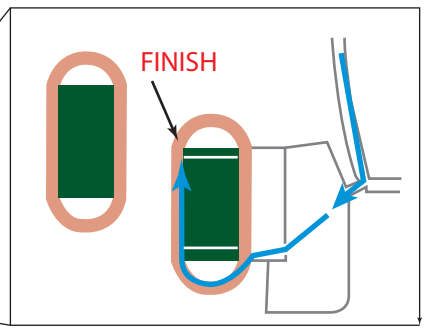
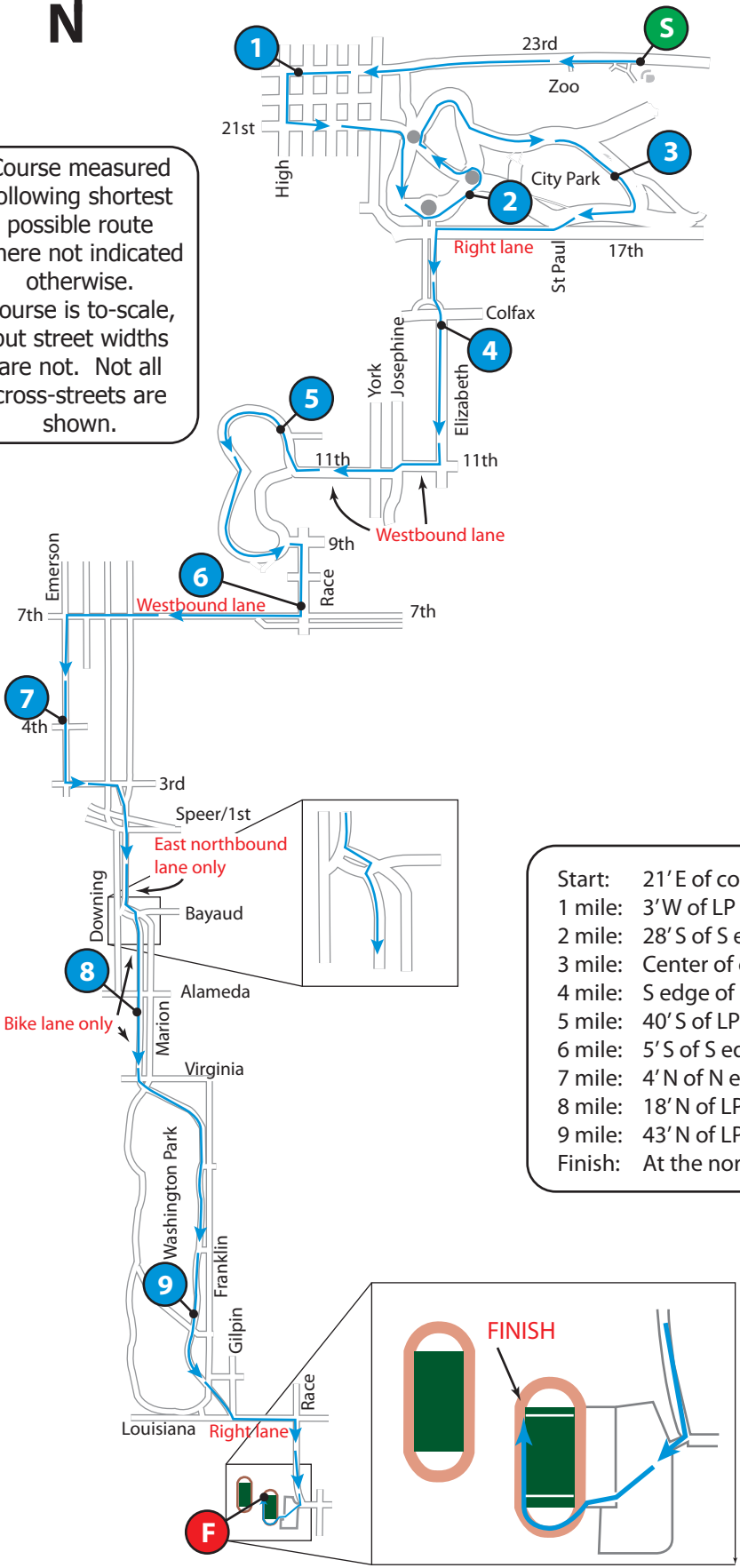


Course measured following shortest possible route where not indicated otherwise. Course is to-scale, but street widths are not. Not all cross-streets are shown.

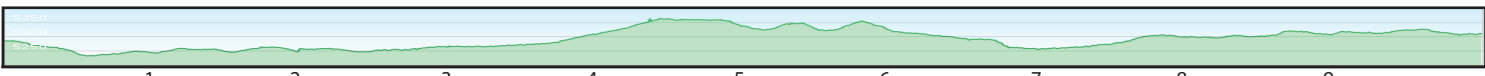
GPS coordinates are given ONLY to get close to described locations. NOT to be used to replace lost marks. Use descriptions to replace lost marks. NAD83

Start:	N39.75115	W104.94523
1 mile:	N39.75068	W104.96400
2 mile:	N39.74567	W104.95475
3 mile:	N39.74643	W104.94673
4 mile:	N39.74007	W104.95633
5 mile:	N39.73538	W104.96488
6 mile:	N39.72772	W104.96372
7 mile:	N39.72283	W104.97640
8 mile:	N39.71083	W104.97243
9 mile:	N39.69772	W104.96942
Finish:	N39.68964	W104.96584

Start: 21' E of concrete pad for bus bench, north of backstops.
 1 mile: 3' W of LP (red numbers) MH33, which is E of alley.
 2 mile: 28' S of S edge of concrete apron in circle by MLK statue.
 3 mile: Center of concrete pad for trash container N of diagonal.
 4 mile: S edge of concrete apron at crosswalk on S side of Colfax.
 5 mile: 40' S of LP 66/28, which is on E side of road.
 6 mile: 5' S of S edge of sidewalk in front of 721 Race.
 7 mile: 4' N of N end of steps at 412 Emerson St.
 8 mile: 18' N of LP 92/65, which is in median S of Alameda.
 9 mile: 43' N of LP 09/50, north of trash bin on W side of road.
 Finish: At the north goal line on the east field.



RaceMeasure has measured this course following USATF guidelines, and stands by the measurement. However, *RaceMeasure* does not set out the course on race-day, and is not responsible for courses not set out precisely according to this map.



Start elevation: 5,285' Finish elevation: 5,312' High point: 5,364' Low point: 5,233'
 Measurement, map, and elevation profile by RaceMeasure, July 2011. www.RaceMeasure.com